

MERROW®

SEWING MACHINE COMPANY

MG-2DNR-1 | INDUSTRIAL PURL EDGE SEWING MACHINE



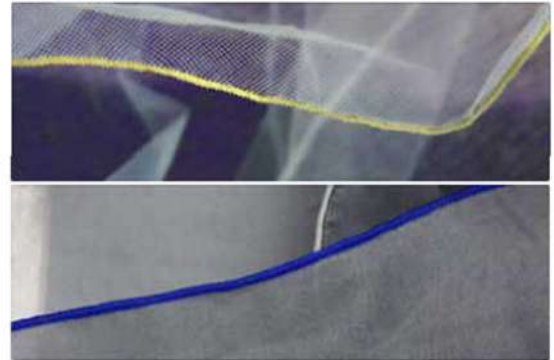
Description

The Merrow Purl Stitching Machine (or merrowing machine) sews a narrow rolled hem on light to mid-weight fabrics. It can be ruffled to create a 'lettuce edge' look as well. Famous for its accuracy, the Merrow Purl edge is unparalleled in the business.

[Read More](#)

[Contact Us](#)

Stitch Samples



OPERATING SPEED	5500 RPM
STITCH WIDTH	1/16" - 3/16"
STITCH RANGE	14 - 40 SPI (22 SPI Standard)
STANDARD NEEDLE	MERROW 2SDT
MERROW NEEDLE RANGE	MERROW 0SDT-4SDT
FEDERAL STITCH TYPE	502
MOTOR REQUIRED*	Merrow M12, 1/2HP, 3450 RPM
NUMBER OF THREADS	2-6

HARI CHAND ANAND & CO

Corporate Head office: A-94/1, Okhla Industrial Area Phase II, New Delhi - 110020

+91 8584068564 | enquiry@grouphca.com

